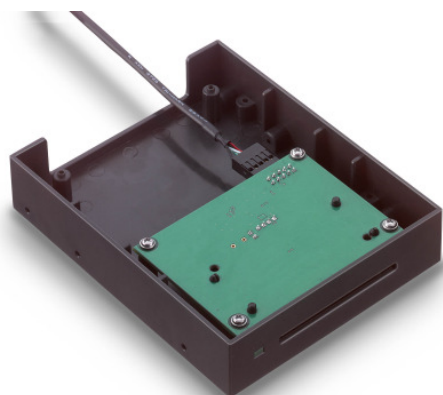


OMNIKEY® Desktop Reader



OMNIKEY® 3921 USB

ASSA ABLOY Identification Technologies (ITG), with its product brand OMNIKEY® one of the world's leading manufacturers of innovative smart card readers, offers with the OMNIKEY® 3921 a high-performance smart card reader in a 3,5" floppy form factor for desktop or tower PC build-in usage. This easy-to-install USB device is well suited for all contact smart card operations like online-banking or digital signature applications.

Main features:

- Driver platform identical to OMNIKEY® 3121
- 3,5" floppy form factor for secure PC integration
- Available with internal and external USB connector cable
- All major operating systems supported
- High speed data transmission
- Robust housing

Host Interface	
Host Interface	USB 2.0 CCID ¹ (also compliant with USB 1.1)
Transmission speed	12 Mbps (USB 2.0 full speed)
Power supply	Bus powered
Smart Card Interface	
Standards	ISO 7816 & EMV ² 2000 Level 1
Protocols	T=0, T=1, 2-wire: SLE 4432/42 (S=10), 3-wire: SLE 4418/28 (S=9), I ² C (S=8)
Card size	ID-1 (full-size)
Smart Card interface speed	420 Kbps (when supported by card)
Smart Card clock frequency	Up to 8 MHz
Supported card types	5V, 3V and 1.8V Smart Cards ISO 7816 Class A, AB and C
Power to Smart Card	60 mA
Smart Card detection	Movement detection with auto power-off / Automatic Detection of smart card type / Short circuit and thermal protection
8 Pin Handling	C4 / C8 supported
Other Features	
Status indicator	Green LED
Reader Board	Also available as PCB
Options	
Customer specific logo or label	On request
Customer specific colors	On request

Supported APIs	
PC/SC driver (ready for 2.01)	
CT-API (on top of PC/SC)	
Synchronous-API (on top of PC/SC)	
OCF (on top of PC/SC)	
PC/SC Driver Support	
Windows® 98 / ME, 2000 / XP (32bit), 2003 Server	
Windows® CE 5.0 / CE.NET (depending on hardware)	
Windows® XP 64bit (AMD64, EM64T, IA64)	
Windows® Vista (32bit / 64bit)	
Linux®	
Mac® OS X (PowerPC / Intel)	
Embedded Technology	
CardMan Smart@Link Chipset	
Hardware Specifications	
Color	Dark grey
Dimensions (LxWxH)	125 x 100 x 25mm 4.92" x 3.94" x 0.98"
Weight with cable	92 gr / 3.25 oz
Operating temperature	0°-55°C / 32-131°F
Operating humidity	10-90% rH
Composition	ABS
Connector cable (internal / external)	Ext. 150 cm / 59.1" Int. 80 cm / 31.5"
Durability	100.000 Insertions
Meantime between failure (MTBF)	500.000 hours
Compliance / Certification	
Microsoft® WHQL ³	CE
EMV ² 2000 Level 1	WEEE
ISO 7816	FCC
HBCI ⁴	UL
USB 2.0 (USB 1.1 compatible)	VCCI
CCID ¹	MIC
GSA Fips201 approved product list	RoHS

1 = Chip Card Interface Device 2 = Europay® MasterCard® Visa® 3 = Windows® Hardware Quality Lab 4 = Homebanking Computer Interface

© ASSA ABLOY ITG reserves the right to change any information or data in this document without prior notice. The distribution and the update of this document is not controlled. ASSA ABLOY ITG declines all responsibility for the use of products with any other specifications but the ones mentioned above. Any additional requirement for a specific customer application has to be validated by the customer himself at his own responsibility. Where application information is given, it is only advisory and does not form part of the specification. 02.11.2007- Page: 1 of 1 This document is subject to change without notice.

ASSA ABLOY Identification Technologies GmbH • Am Klingenberg 6A • 65396 Walluf, Germany • Tel: +49 6123 791-0 • Fax: -110 • info@aaitg.com • www.aaitg.com

